

# Modeling The SR&RL RR Dickey Road Underpass



**Palmetto Division - SER**

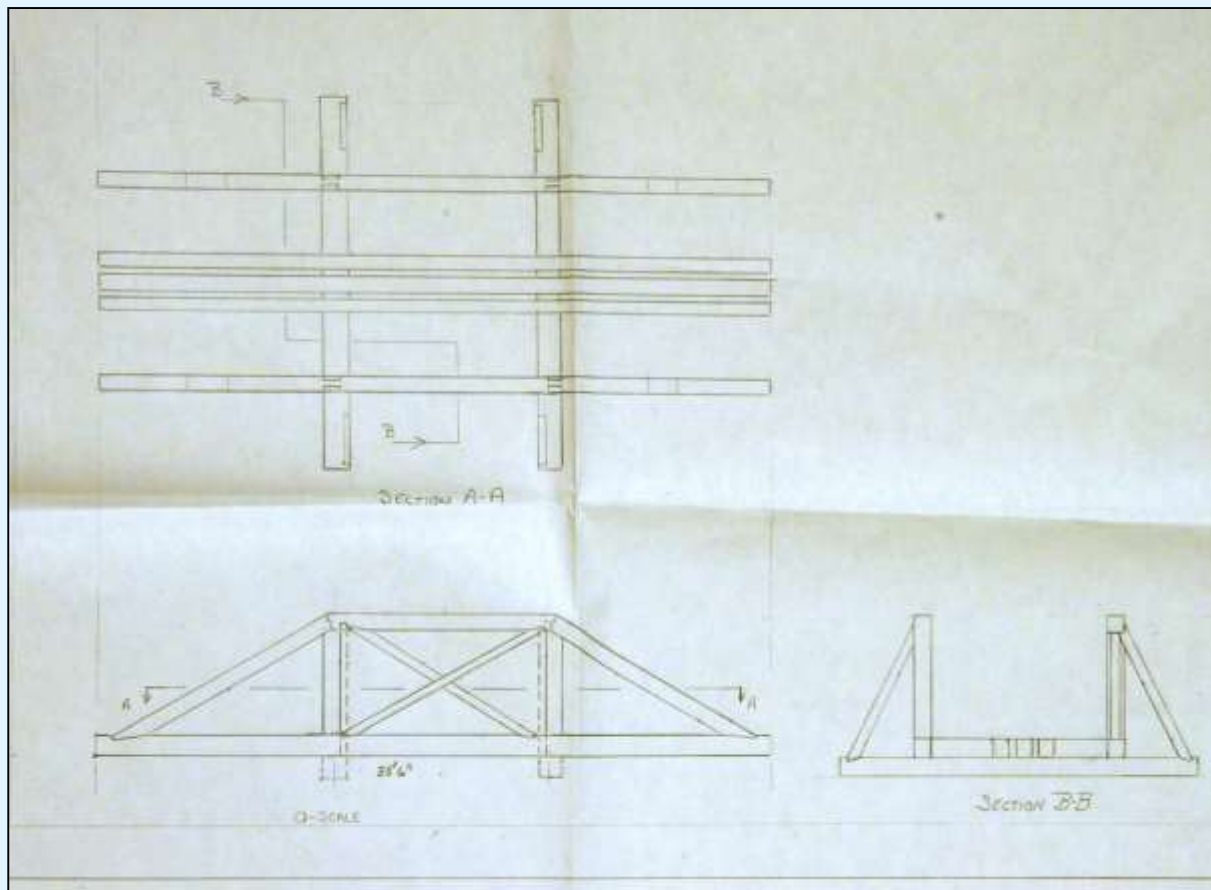
**November 15, 2014**

**Ben Bartlett MMR**



# Modeling The SR&RL RR Dickey Road Underpass

## Rescaled Drawing with Third View



# Modeling The SR&RL RR Dickey Road Underpass

## List of Materials

### Wood

12"x 14" Strip  
12"x 10" Strip  
10"x 10" Strip  
3"x 10" Strip  
6"x 6" Strip  
4"x 6" Strip  
3"x 6" Strip

### Misc

Small Staples  
Code 70 Rail  
Styrofoam  
Woodland Scenics Ground Cover  
Hydrocal  
Polyscale – Grimy Black, Rust,  
Gray  
Chalks

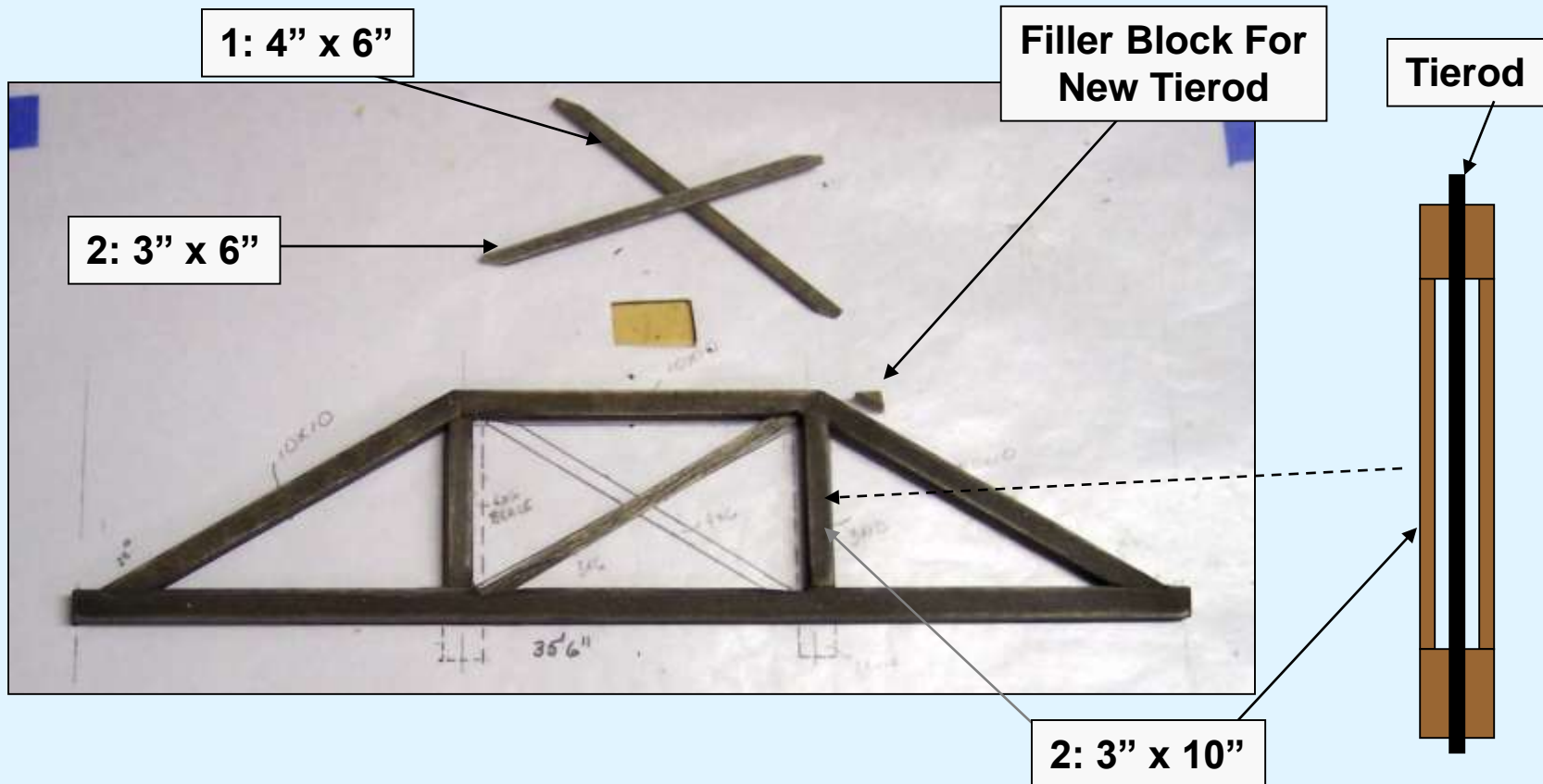
### Styrene

Tichy # 8144 NBW castings ( O-Scale 1 5/8" Bolt)  
Tichy # 8034 NBW castings ( O-scale 1 3/4" Bolt)  
Tichy # 8016 NBW castings ( O-Scale 7/8" Bolt)  
.025 Rod  
.015 x .100 Strip  
.020 x .125 Strip



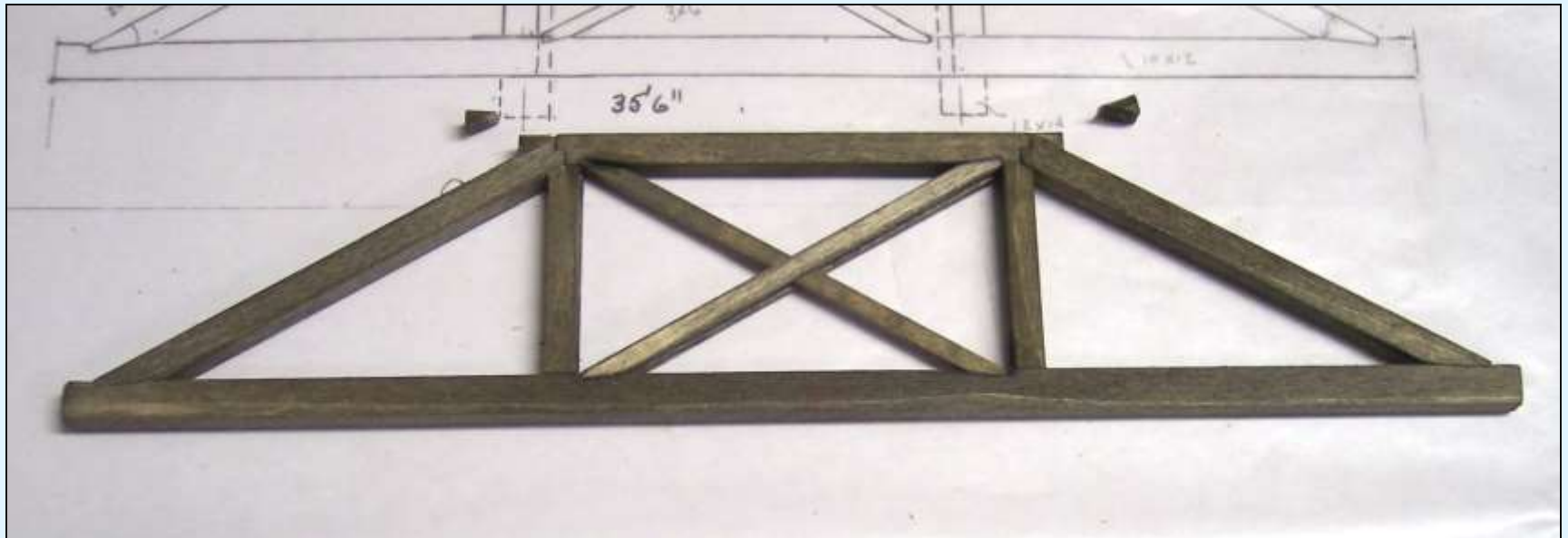
# Modeling The SR&RL RR Dickey Road Underpass

## Details of Truss Assembly



# Modeling The SR&RL RR Dickey Road Underpass

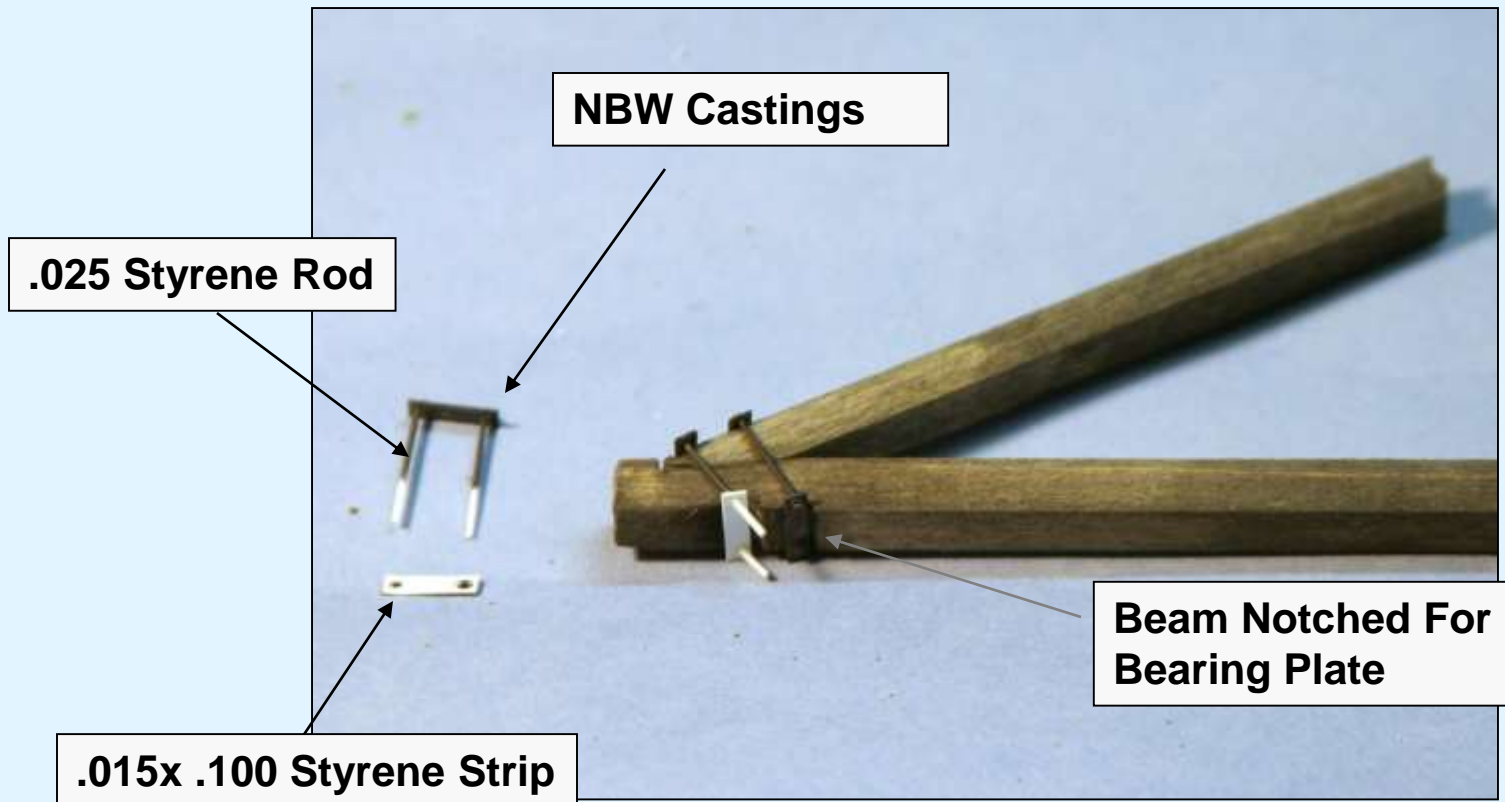
Assembled Truss





# Modeling The SR&RL RR Dickey Road Underpass

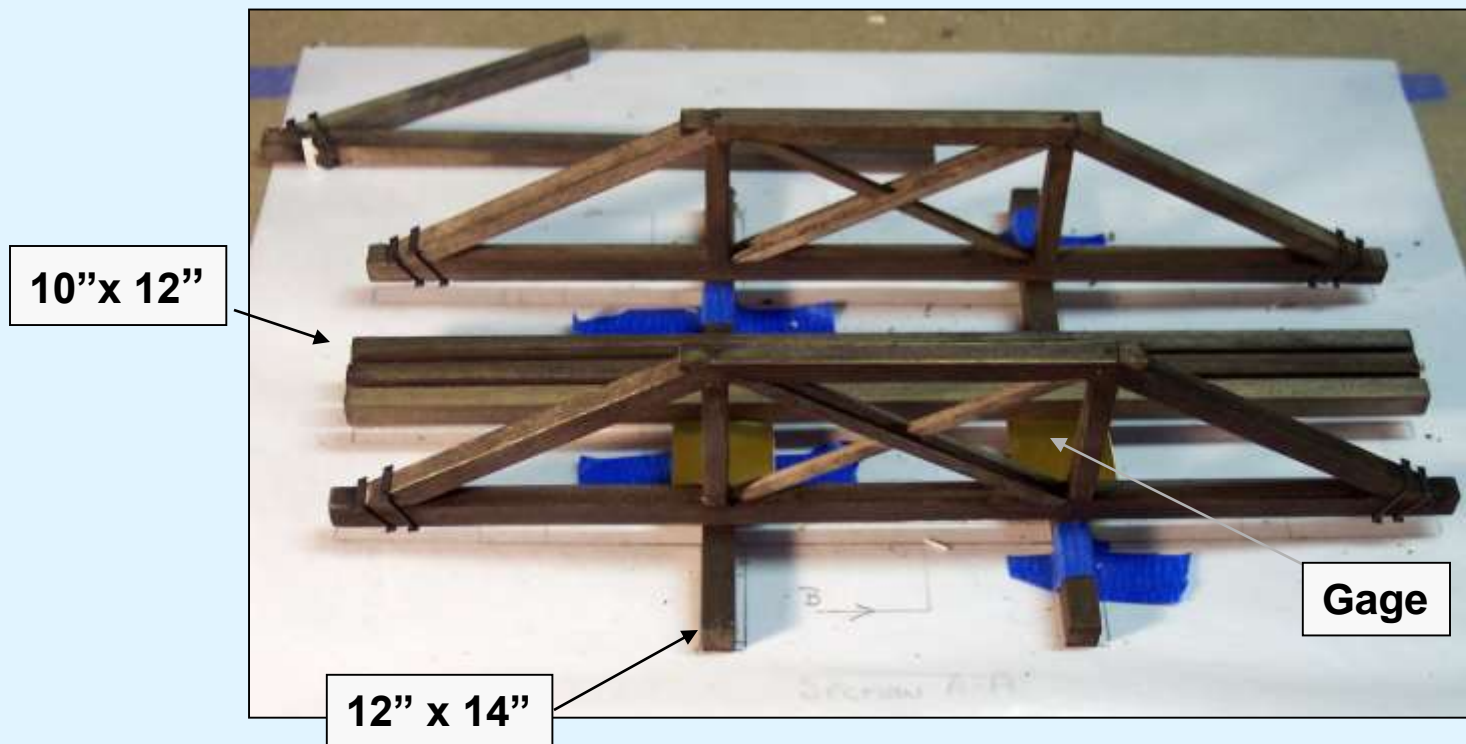
## Truss End TieBar Details





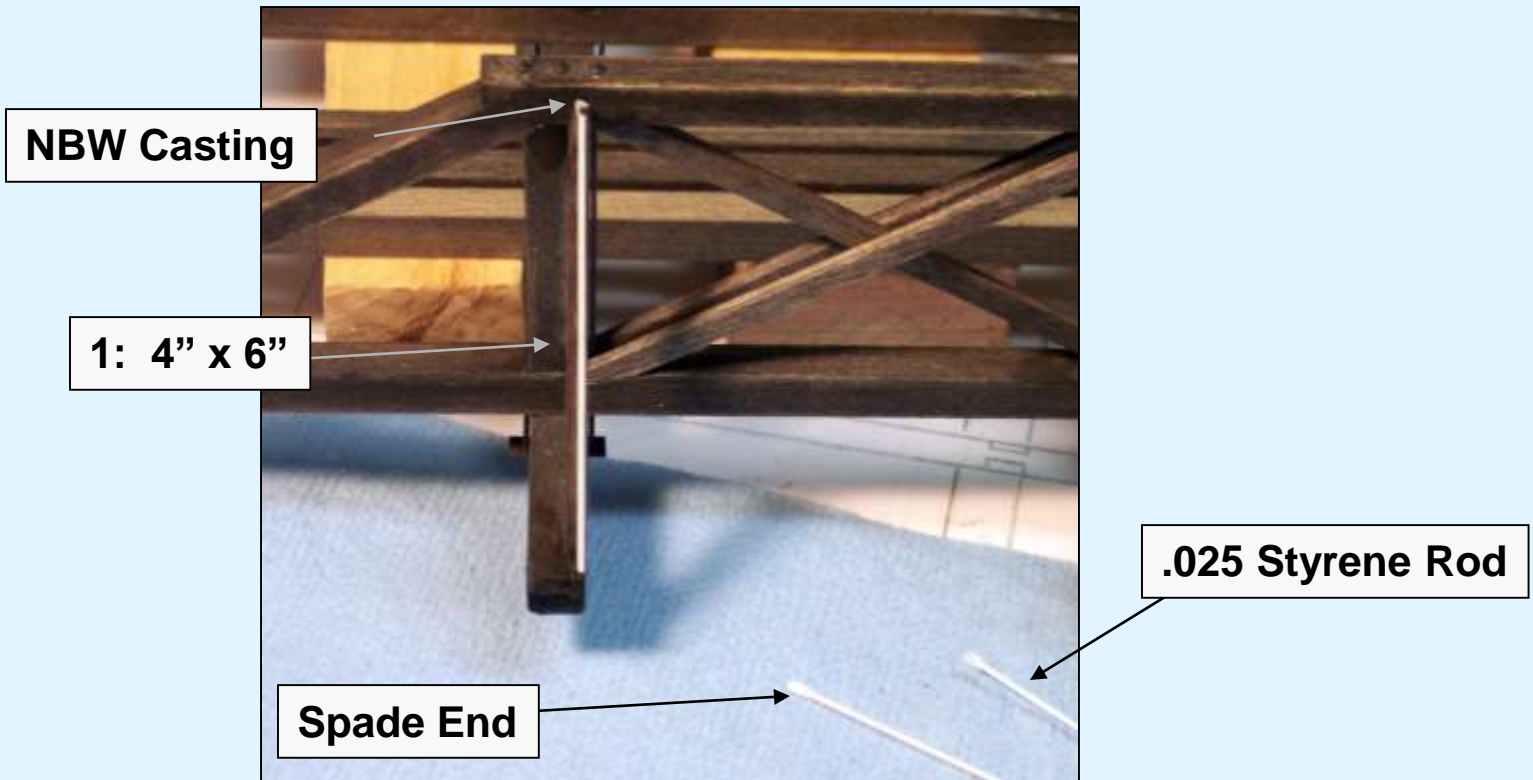
# Modeling The SR&RL RR Dickey Road Underpass

## Truss, Main Beam and Cross Beam Assembly



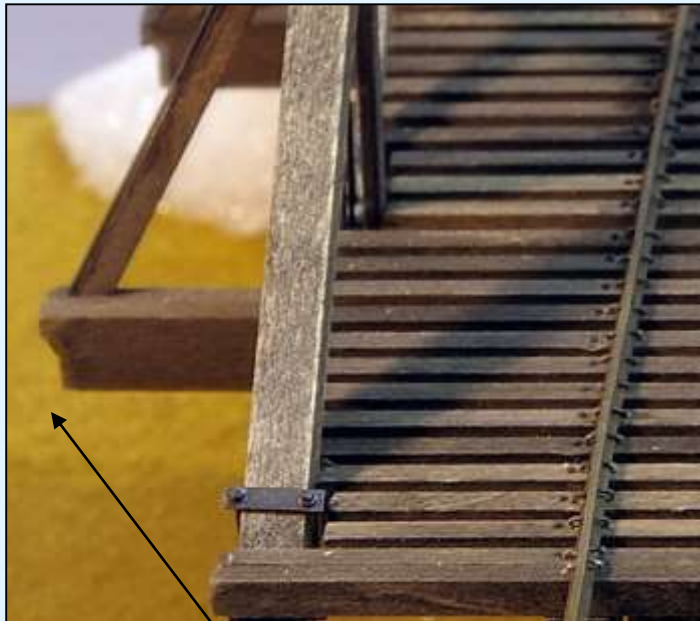
# Modeling The SR&RL RR Dickey Road Underpass

## Side Brace and Tierod



# Modeling The SR&RL RR Dickey Road Underpass

## Side Brace Tierod Installation

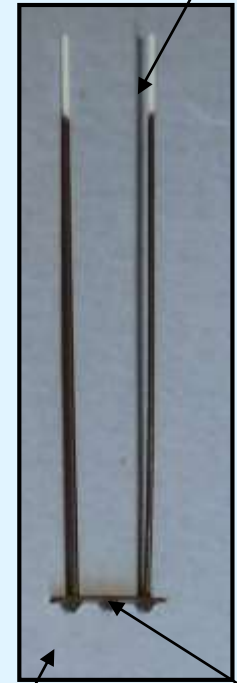


Notched Beam End



NBW Casting

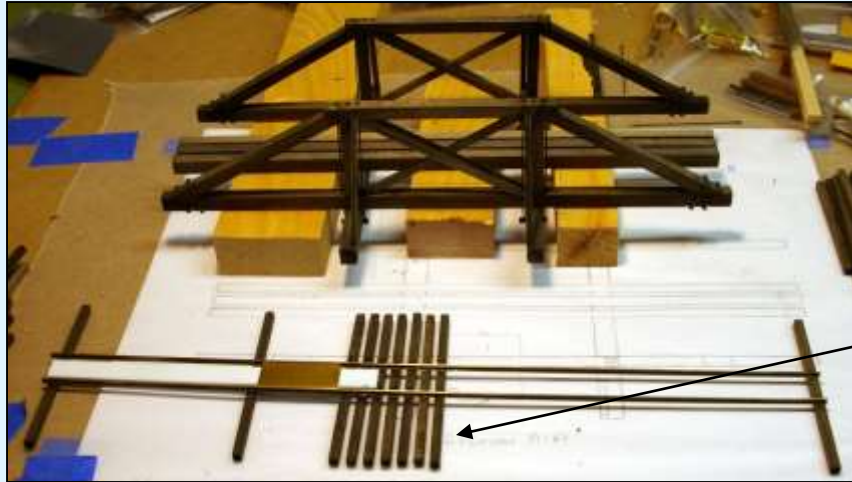
.025 Styrene  
"New" Tierods



.020 x .125  
Styrene Strip

# Modeling The SR&RL RR Dickey Road Underpass

## Initial Tie installation



Track "Panel"

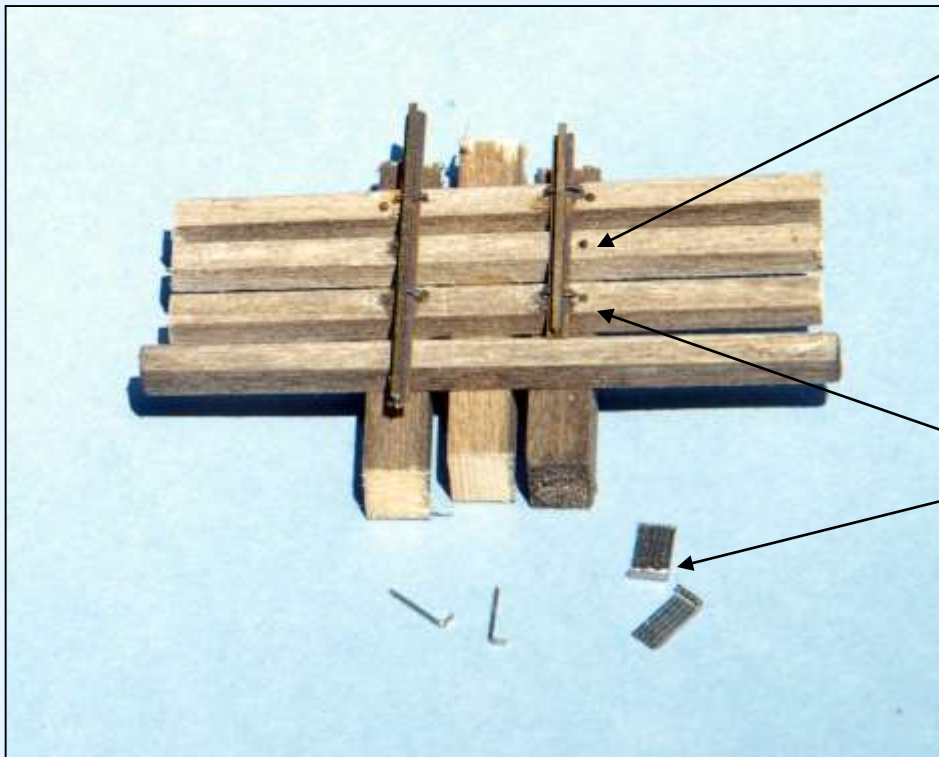
6"x 6" Ties with  
4" Spacing

## Panel Installation



# Modeling The SR&RL RR Dickey Road Underpass

## Rail Installation Trial



NBW Castings

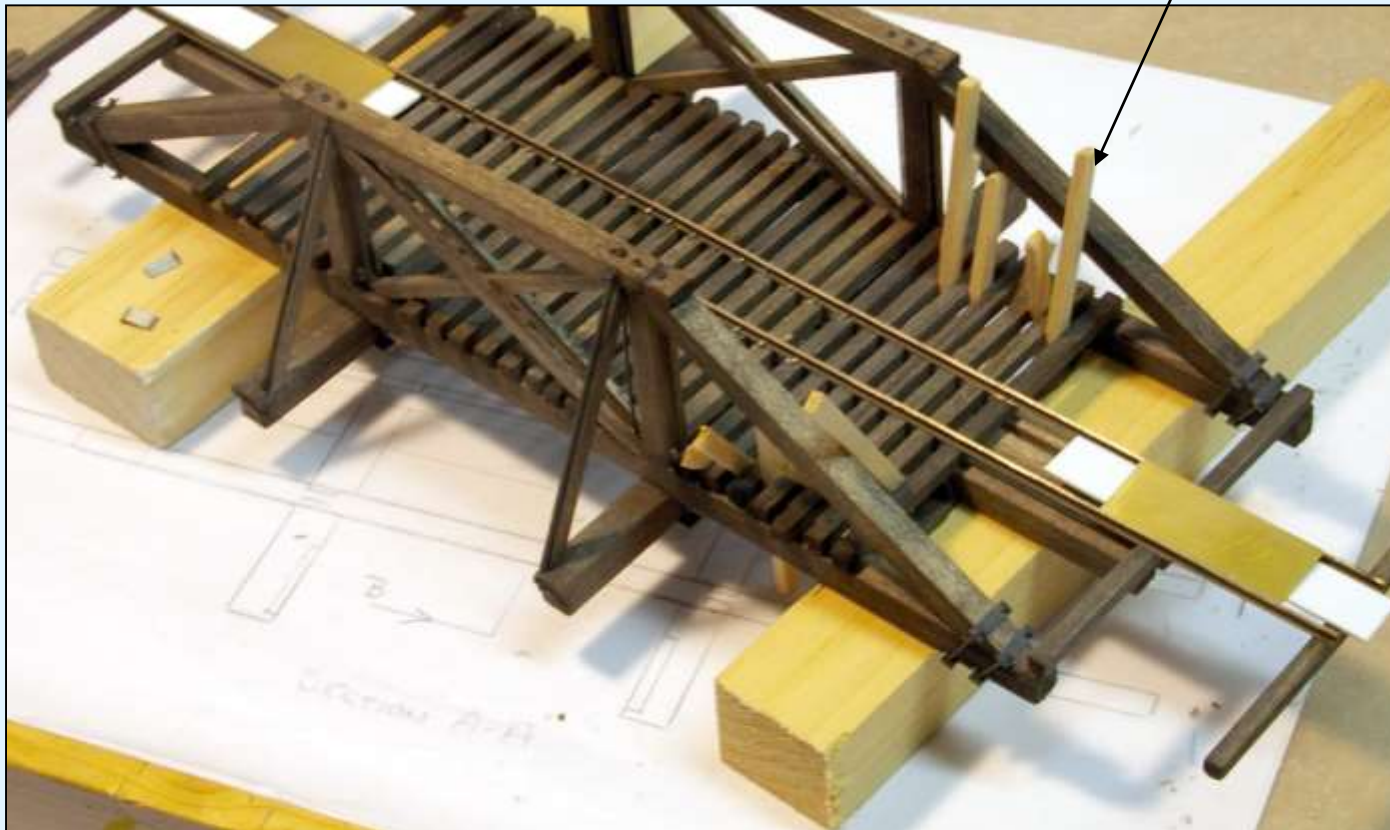
Spikes from Staples



# Modeling The SR&RL RR Dickey Road Underpass

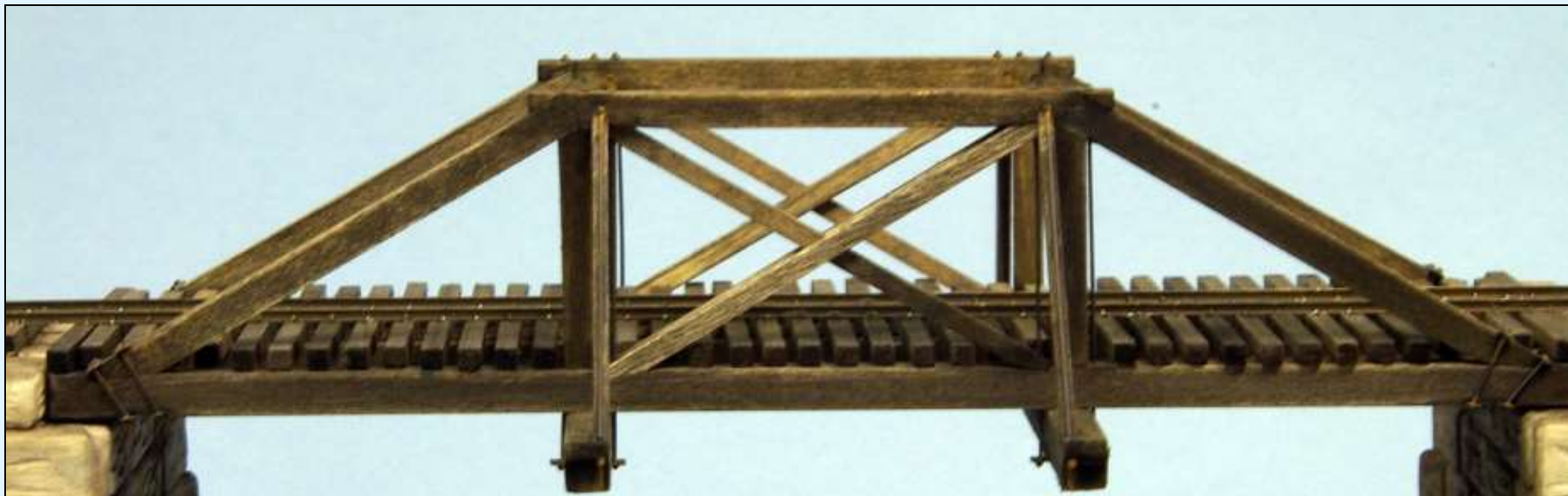
## Tie Installation

4" x 6" Tie Spacers



# Modeling The SR&RL RR Dickey Road Underpass

Almost Finished Bridge





# Modeling The SR&RL RR Dickey Road Underpass

**Abutment Blocks  
Masters and Molds**

**Abutment Mock Up**

**48" L x 24" W x 18" H**

**24" L x 12" W x 9" H**



# Modeling The SR&RL RR Dickey Road Underpass

## Finishing Up

Lt Grey Paint, India Ink Wash & Chalk



Stained  
Hydrocal Chips



# Modeling The SR&RL RR Dickey Road Underpass

Finished Dickey Road Underpass Model



November 15, 2014

**Dickey Rd. Underpass Model Reference Material:**

1911 Upgrade Drawing – Available from Underground Press, plans@citcom.net

Maine Two Foot Quarterly –Vol. 9 Issue 4: Sn2 model article –

Contact M2FQ@aol.com for Back Issue Availability

Light Iron Digest Issue 49: On2 Model Article Contact Lightirondigest.com For Back Issues

**Maine Two Foot Reference Material:**

DVD – Mark I Video “The Edaville Collection” - Mark1video.com

Yahoo Groups : Maine2footquarterly@yahogroups.com

maine-two-foot-modelers @ yahogroups.com

**Books:**

“The Maine Two Footers “ Linwood Moody: Available Used on Amazon

“The Maine Scenic Route” H. Temple Crittendon: Available Used on Amazon

“Maine Narrow Gauge Railroads” ArcadiaPublishing.com

Other Book Sources: eBay, maine2footquarterly.com

**Drawings:**

Underground Press - plans@citcom.net

Maine 2 Foot Quarterly - maine2footquarterly.com

**Maine Two Foot Railroad Museums**

Wiscasset, Waterville & Farmington Railway Museum - wwfr.org

Maine Narrow Gauge Railroad Company –mainenarrowgauge.org

Sandy River & Rangely Lake Museum - srl-rr.org