

# Capturing the Blue Comet

Transforming Production Models Toward the Prototype



**Robert M. Seel, AIA**

R m s  architecture

Design, Interiors, Planning, Etc.

# The Basic Situation faced in Prototype Modeling

You need or want stuff that no one else  
makes –

except for ,maybe, brass

- Locomotives
- Rolling Stock

# What are the choices?

- Buy **BRA\$\$** – if available and if feasible
- Scratch build
- Forget it!
- Buy an incorrect production model
- Modify a production model

# What are the choices?

- By **BRA\$\$** – if available and if feasible



Overland brass model: \$1,800 – 2,400 on eBay, 2022

# What are the choices?

- Buy an incorrect production model



Broadway Limited Imports "USRA Heavy Pacific"

# What are the choices?

- Modify a production model



Broadway Limited Imports “USRA Light Pacific”

# Modify a Production Model – Steps

Do your research

- Gather photos and descriptions
  - Books
  - Internet
  - Railroad Historical & Technical Societies
- Strategize – How will this be done?
- Find a suitable model as a starting point
- Get parts and materials

# Modify a Production Model – Steam Locomotives

Modify as little as possible

- Wheel arrangement - priority
- Steam chest and cylinders - complicated
- Boiler shape - complicated
- Cab type / shape - easier
- Tender shape – depends on skill and patience



And now . . . On to my  
project



RAILROAD ART © 2019 ANDY ROMANO

# Central Railroad of New Jersey

## The Blue Comet

- 1929 - 1941
- Jersey City (ferry to Manhattan) to Atlantic City
- Luxury coach train
- Originally scheduled twice daily

# Central Railroad of New Jersey

## The Blue Comet

G-3 class 4-6-2 Pacific locomotives

- 831
- 832
- 833



# Central Railroad of New Jersey

## The Blue Comet

Car fleet named after comets

2 baggage cars

2 combine / smokers

1 diner

8 coaches

3 observation coaches



# How it all started



AHM passenger cars

Which led to . . . My first  
attempt



IHC "USRA Light Pacific"

Which led to . . . My  
second attempt



Broadway Limited Imports “USRA Light Pacific”

Filing, chiseling, sanding,  
cutting, drilling, building-out,





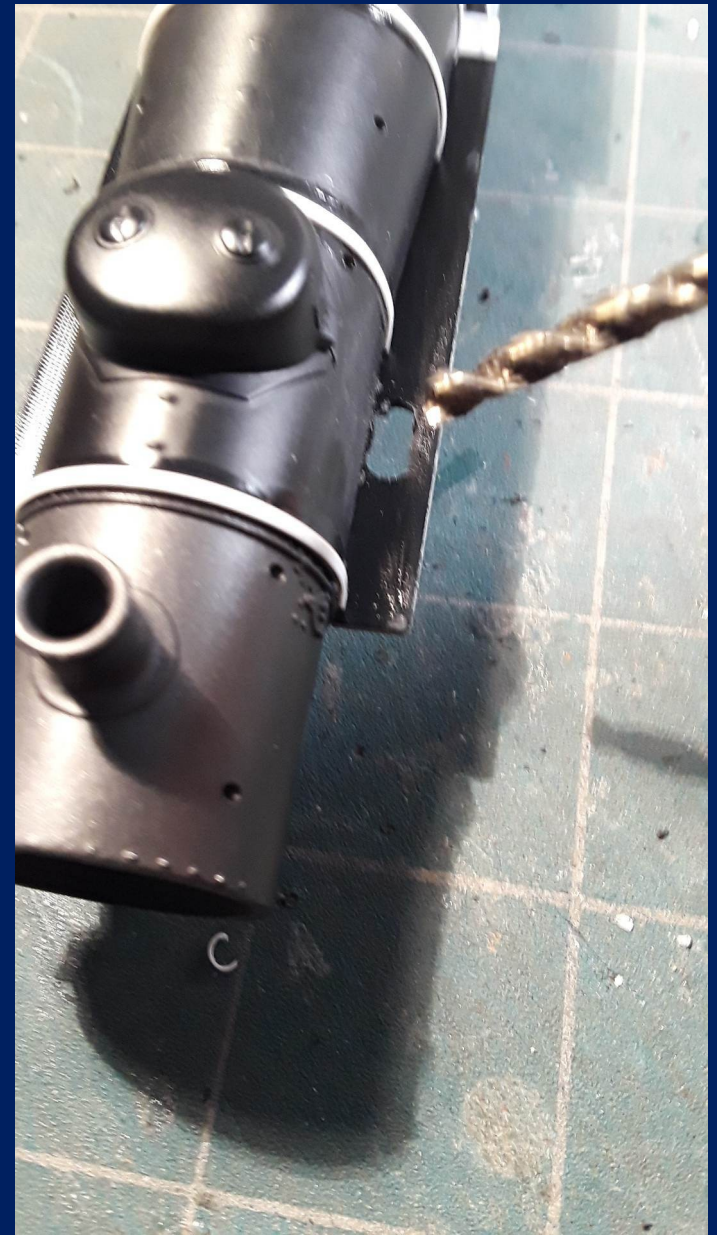
# Removed:

- Sanders
- Injectors & piping
- Air tanks and piping below running boards
- Rear running boards
- Cut-away cab corner



# Drilled:

- Air compressors
- Feedwater pump



# Added, Built, Replaced:

- Boiler jacket bands
- Running boards, raised, and extended
- Front running board steps
- Firebox
- Turret cover
- Air Tanks
- Piping



# Challenge: Disassembly!

- 2-piece boiler
- Smokebox front
- Cab
- Slip joints (firebox)
- Alene's Tacky Glue (feedwater heater)



# Challenge: Disassembly!



# Detail Parts:

Mostly Precision Scale and Cal Scale

- Elesco feedwater heater, bracket and pump
- Classification lights
- Pilot signal box
- Pilot train control box
- Sanders
- Twin air compressors
- Injector valves
- Boiler steps



# Detail Parts:

Mostly Precision Scale and Cal Scale

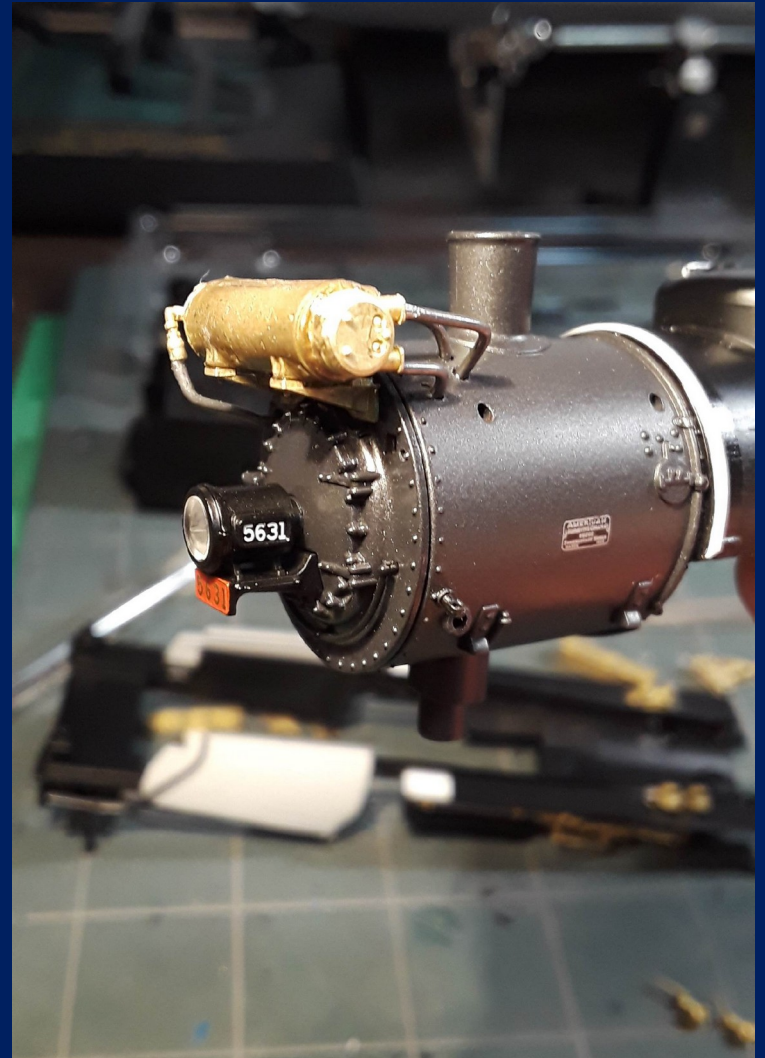
- Power reverse
- Brake & signal hoses
- Steam dome valve



# Detail Parts:

Continued

- Washout plugs
- Bell
- Sunbeam generator
- Whistle
- Pop valves
- Piping brackets
- Brass and steel wire piping
- Sand dome grab irons
- Headlight & Handrails from stock model

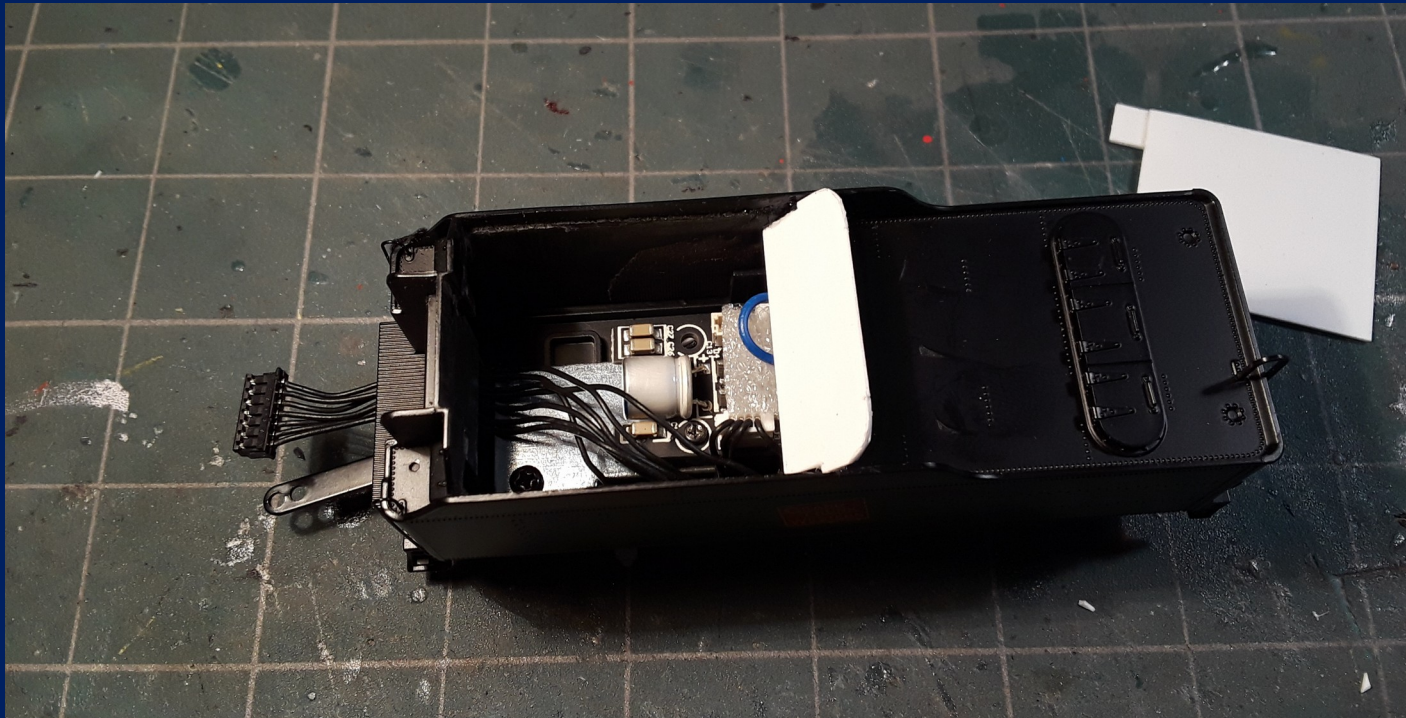




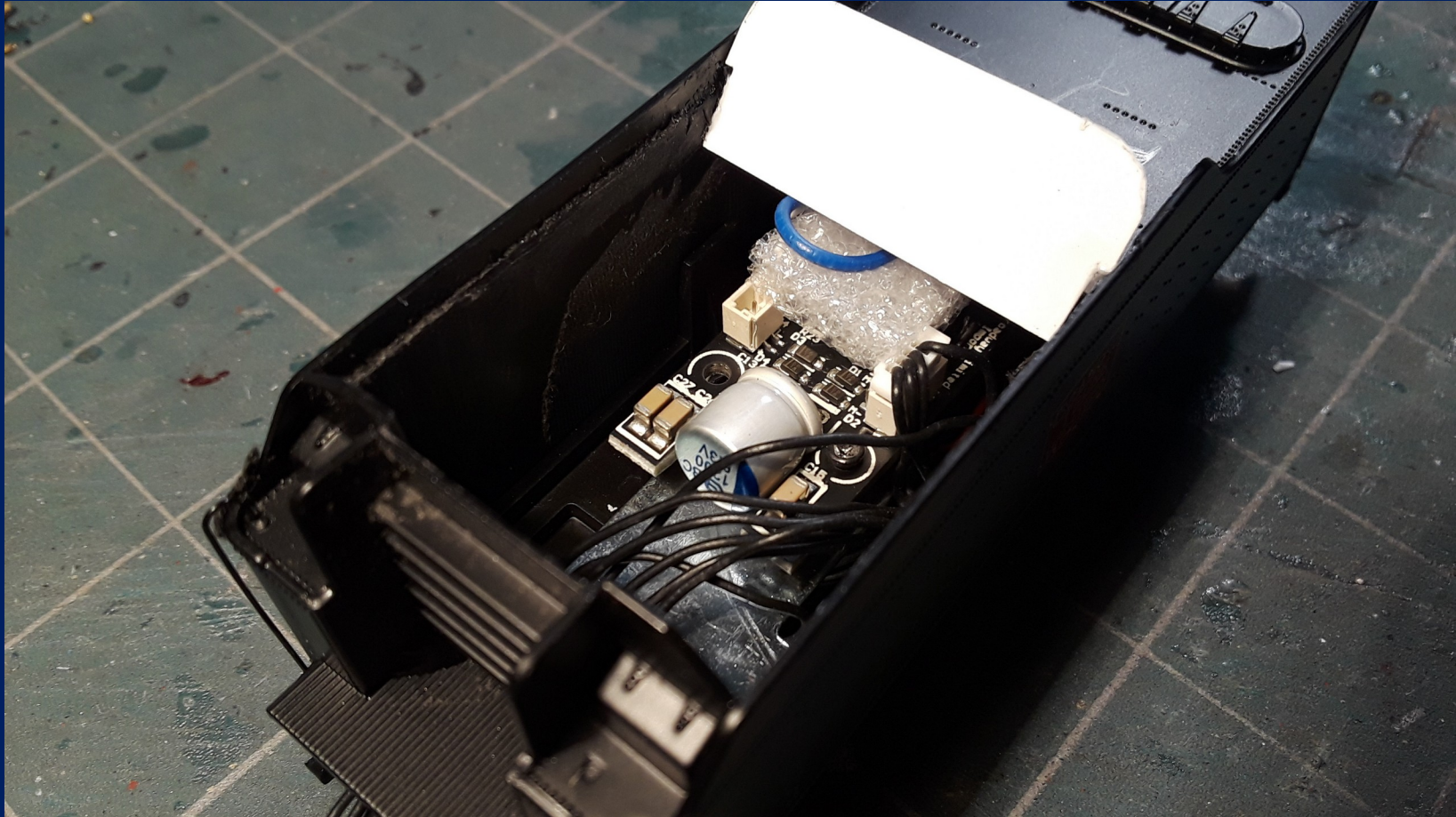
# Tender:

Remove and rebuild the coal bunker

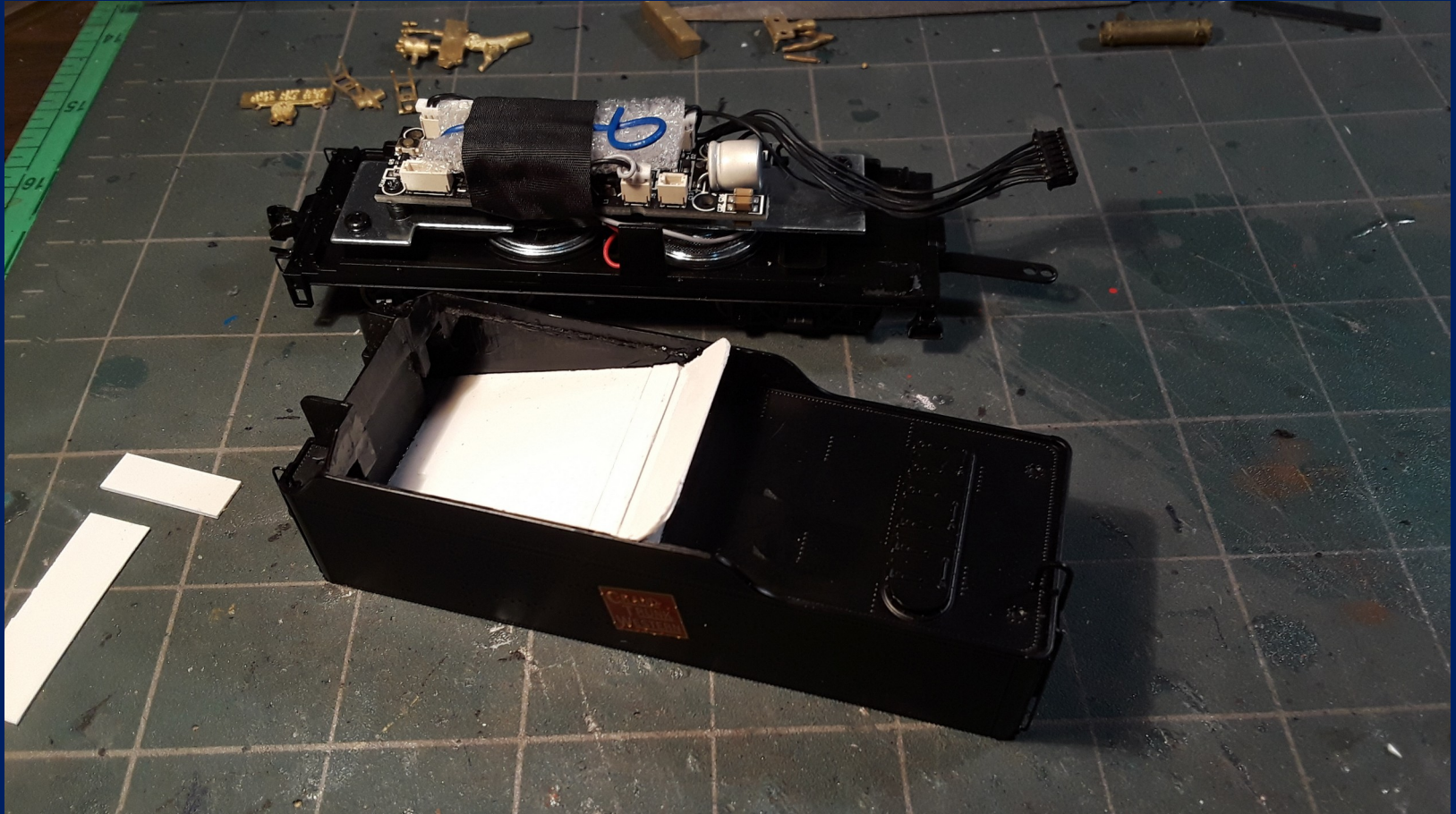
- Remove molded coal load
- Build new bunker slope sheet
- Watch for electronics!



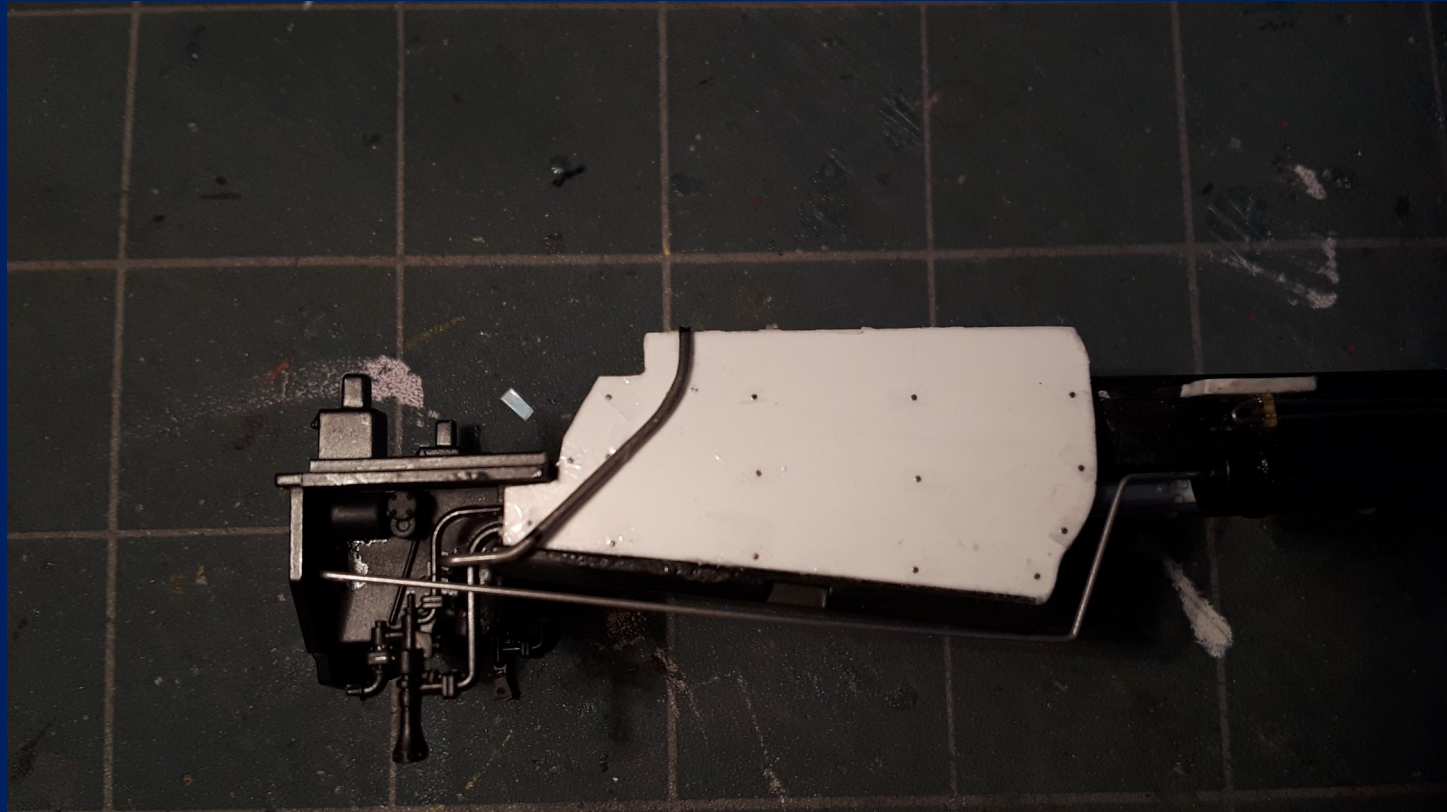
Tender:



Tender:



# Firebox Rivets:



34 individual 3D rivet decals

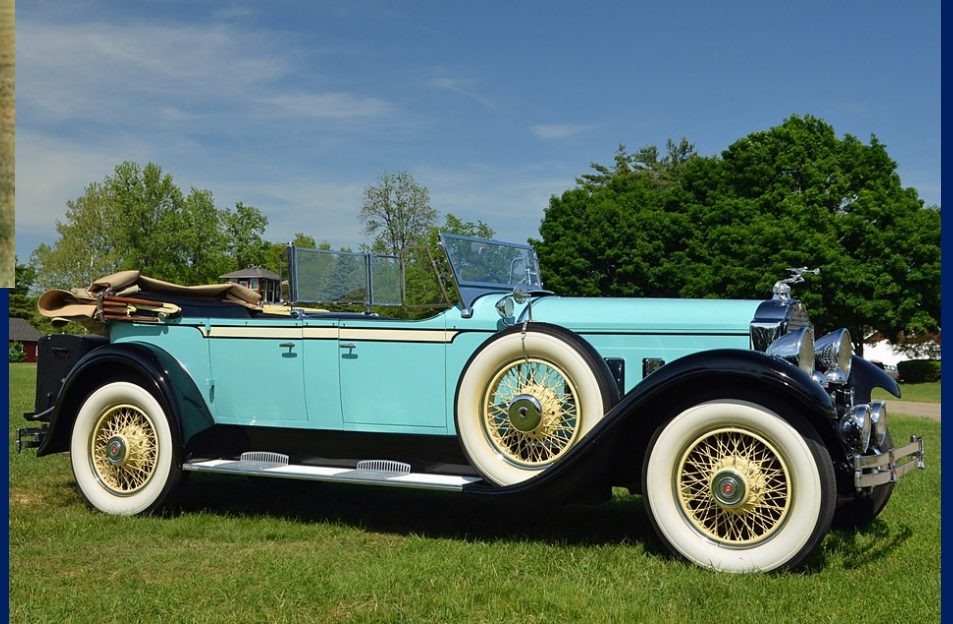
# Colors and Painting

## The Blue Comet

- Dark Blue – the Sea
- Jersey Cream – the Sand
- Packard Blue – the Sky
- Colors up to interpretation
- Only 4 or 5 color slides are known to exist, property of the Railroad Museum of Pennsylvania. Colors have shifted with age

# Colors and Painting

## Packard Blue ?



# Colors and Painting

## Packard Blue ?



# Colors and Painting

## Packard Blue ?





# Colors and Painting

## The Blue Comet



Overland brass model

# Colors and Painting

## The Blue Comet



Lionel model

# Colors and Painting

## The Blue Comet



Lionel model

# Colors and Painting

## The Blue Comet



MTH model

# Colors and Painting

## The Blue Comet



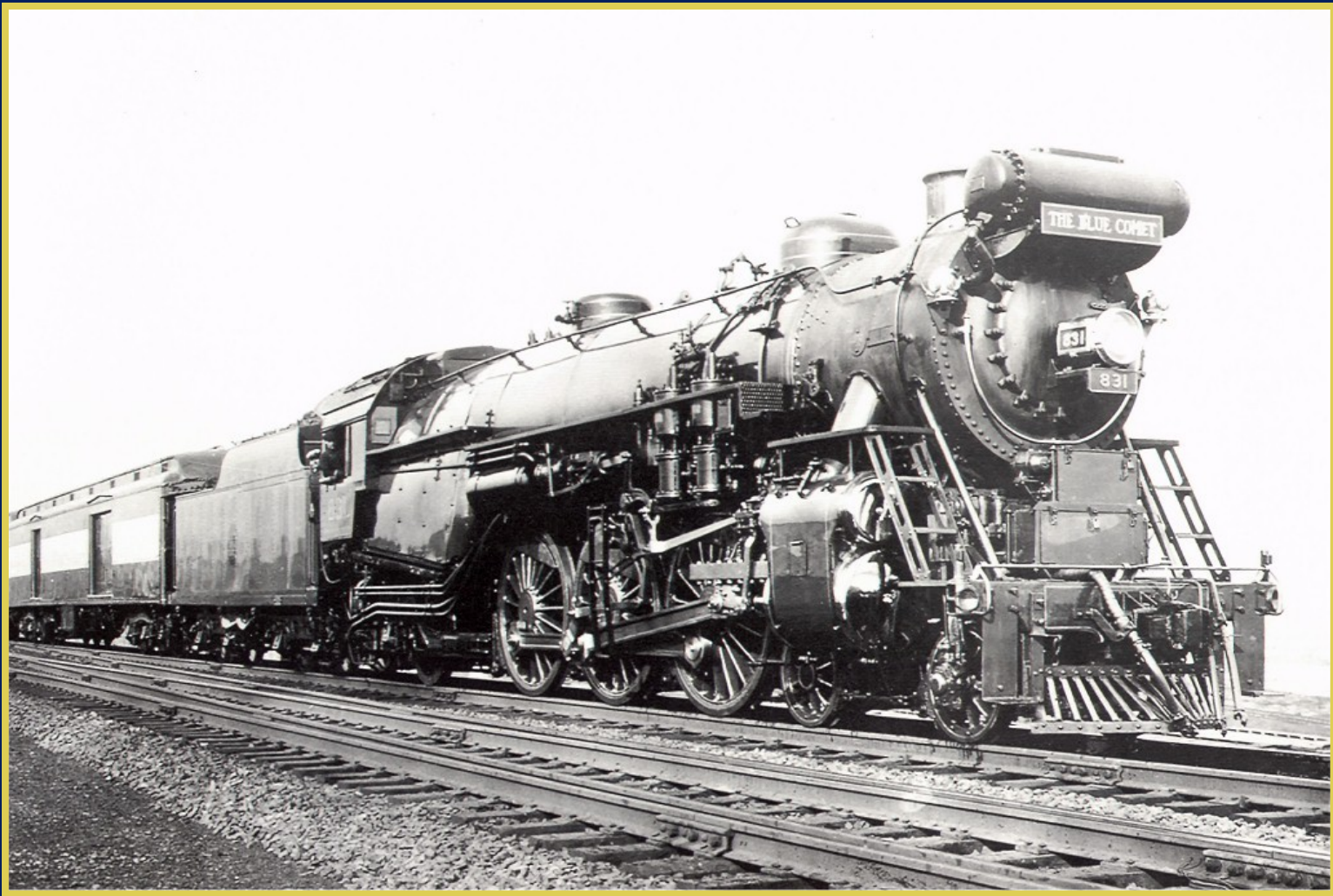
Broadway Limited Imports model

# Colors and Painting The Blue Comet



United Railroad Historical Society, NJ

# Colors and Painting



Publicity photo

# Colors and Painting



Colorized photo



# Colors and Painting



Railroad Museum of Pennsylvania color slide

# Colors and Painting

My interpretation:

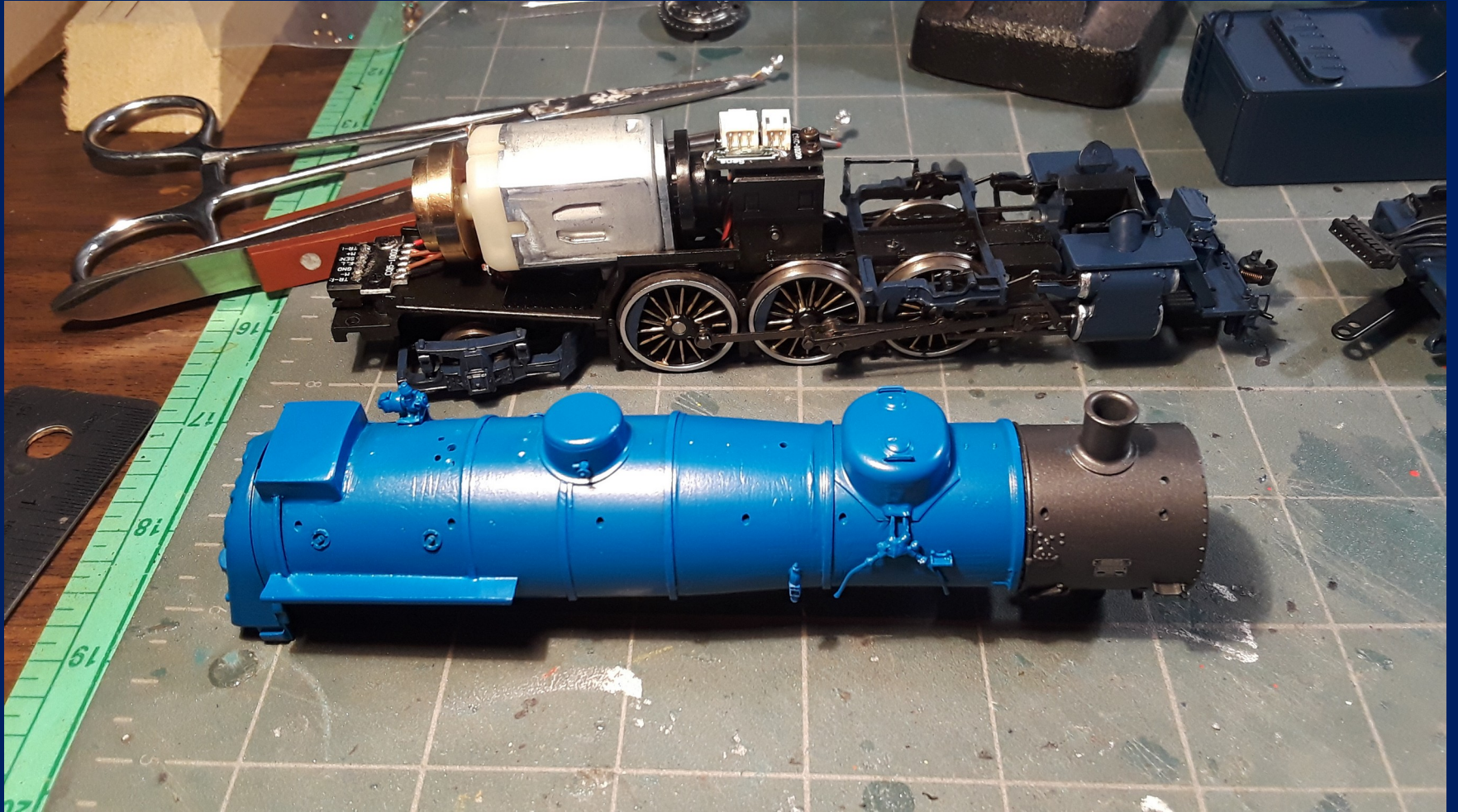
- Dark Blue – C&O Enchantment Blue  
Badger Model Flex acrylic
- Jersey Cream – AHM color “as is” on cars
- Packard Blue – Great Northern Big Sky Blue  
Badger Model Flex acrylic
- Liquid Chrome & Gold paint pens – Hobby Lobby
- Decals by Tom’s Model Trains, Scotch Plains, NJ  
(closed and discontinued)

# Colors and Painting

- Dark Blue – C&O Enchantment Blue
- Jersey Cream – AHM color “as is” on cars
- Packard Blue – AHM color “as is” on cars
- Satin black -- trucks and roof



# Colors and Painting



# Finishing touches



Preiser engineer and fireman

# Finishing touches



Real anthracite coal

# The Blue Comet



# The Blue Comet





# The Blue Comet



# The Blue Comet



# The Blue Comet



# The Blue Comet





**RMSARCHITECTURE**

R m s  a r c h i t e c t u r e

**Design, Interiors, Planning, Etc.**



**RMSARCHITECTURE**

R m s  a r c h i t e c t u r e

**Design, Interiors, Planning, Etc.**

R m s  architecture

---

Design, Interiors, Planning, Etc.